



**Arkman**  
**Logistics**

**International & Domestic  
Logistics Solutions**



# About Arkman Logistics, Inc.

Arkman Logistics, Inc. is a premier total logistics provider servicing domestic and international clients in:

- Air/Ocean Imports/Exports
- Freight Forwarding
- Distribution
- Warehouse Management
- Containerizing
- In-Land Transportation
- Specialized Logistics Project Management



# History of Arkman Logistics, Inc.

2008

in the state of Illinois, city of Chicago by permission of U.S. Federal Government, Arkman Logistics, Inc. was established.

2008

IAC #: NC1103013

NVOCC #: 023278N

2012

Arkman Los Angeles, CA branch opening

2013

Arkman HQ 2200 Estes Ave Elk Grove Village IL  
Acquisition and relocation

2014

Arkman Memphis branch opening

Arkman Atlanta branch opening

FDA Registration for beverage warehousing and distribution  
Registration No. 11026721500

## Service Provided

### Inland Transportation and Warehousing

- \* Import container transportation
- \* Bonded transportation
- \* General product transportation (Pick up/Delivery)
- \* General Product storage on 53,000 sq.ft warehouse
- \* Import/export product cross-docking & storage
- \* Container stuffing
- \* Inventory & distribution of COG products
- \* Nationwide transportation network



## Service Provided continued

### Air & Ocean Transportation

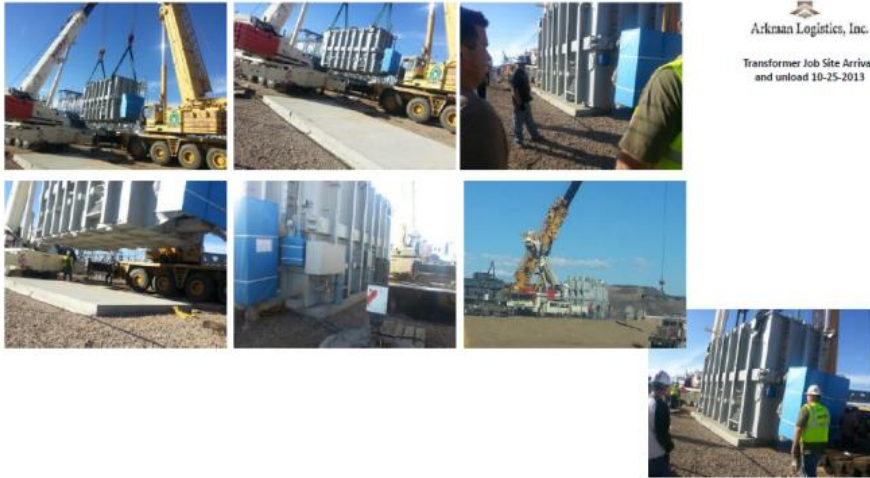
- \* Import and export process from origin to destination
- \* Documentation preparation service (B/L, AWB)
- \* Cargo Insurance service
- \* Customs clearance service
- \* Real time cargo tracking service



# Service Provided continued

## Specialized logistics Project Management

- \* PMP Certified Project Manager on staff
- \* Cost estimation & consolidated vendor management
- \* Total logistics process mapping
- \* Organized presentation for stakeholders



  
**Arkman Logistics, Inc.**  
Transformer Job Site Arrival  
and unload 10-25-2013

Project	WAPA Project
Jobsite	Western Area Power, Hayden Substation 38543 CR 51B Hayden, CO 81639
End User Representative/Project Manager	Charly-Marc Hadid MVA Power, Inc.
Vessel Schedule	POL Ulsan, Korea POD Houston, TX Carrier M/V. Rickmers Dalian V-355 Sailed Ex Ulsan 8/31/2013 ETA Yokohama 9/3/2013 ETD Yokohama 9/4/2013 ETA Houston 10/1/2013 ETD Houston 10/6/2013 Vessel ETA
Port Information	Houston City Docks 27/28 Terminal Operator Ports America Address 10100 Lower Level Rd Ports of Houston Houston, TX 77029 Hook/Hook
Shipment Terms	HV Power Transformer
Cargo Details	Total pc/vt/dims 27 Sets/343,631LBS / 363.5 CBM Main Body (175CBM) Load Under deck / non stackable (direct Instruction: discharge) Accessories loading instruction under deck / stackable



  
**Arkman Logistics, Inc.**  
Dashboard





Some of the clients we serve





Strategic Partners we work with



ASIANA AIRLINES

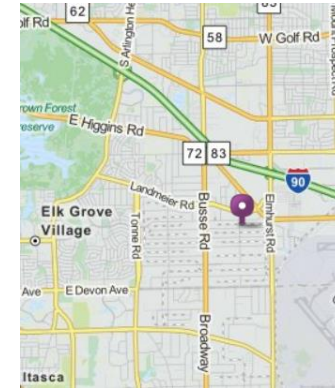
 **HANJIN SHIPPING**



**TERRY**  
*Crane & Rigging*



# Arkman Locations



**WHSE: 53,000 sq.ft**

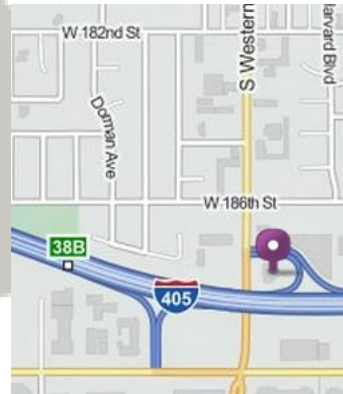
**ILLINOIS (HQ)**  
 2200 Estes Ave Elk Grove Village, IL 60007  
 Phone: 847-364-3500 Fax: 847-364-3521  
 E-mail: [Arkman@arkmanusa.com](mailto:Arkman@arkmanusa.com)

**WHSE: 10,000 sq.ft**



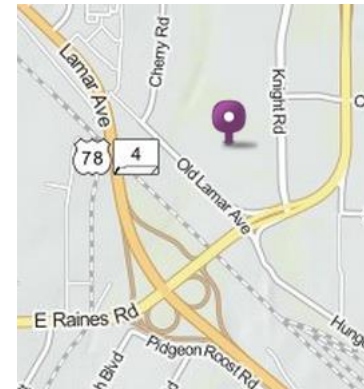
**NEW YORK**  
 147-38 182nd Street, 1FL  
 Jamaica, NY 11434  
 Phone: 718-244-0888 / Fax: 718-244-0876  
 E-Mail: [NYC@arkmanusa.com](mailto:NYC@arkmanusa.com)

**WHSE: 5,000 sq.ft**



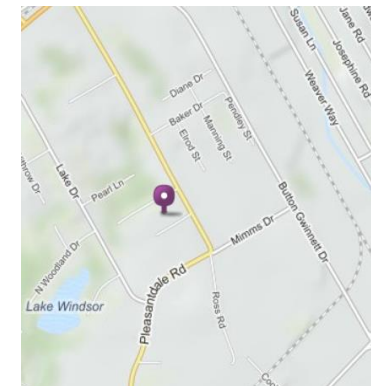
**CALIFORNIA**  
 18726 S. Western Ave. Suite 207  
 Gardena, CA 90248  
 Phone: 310-294-9990  
 Email: [LAX@arkmanusa.com](mailto:LAX@arkmanusa.com)

**WHSE: 12,450 sq.ft**



**MEMPHIS**  
 3861 Knight Road Unit 7-8  
 Memphis, TN 38118  
 Phone: 901- 509 – 8062  
 E-mail: [memphis.whse@arkmanusa.com](mailto:memphis.whse@arkmanusa.com)

**WHSE: 5,000 sq.ft**



**ATLANTA**  
 2440 Pleasantdale Road Ste 120  
 Doraville, GA 30340  
 Phone: 770-676-7715 / Fax: 770-676-9035  
 E-mail: [atl@arkmanusa.com](mailto:atl@arkmanusa.com)